

COUNT	DESCRIPTION OF REVISIONS	BY	CHKD	DATE	COUNT	DESCRIPTION OF REVISIONS	BY	CHKD	DATE
△					△				
△					△				

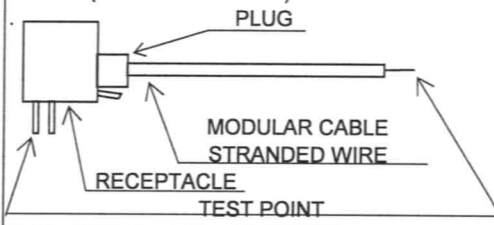
APPLICABLE STANDARD		TIA/EIA-568-B.2 CATEGORY5e								
RATING	OPERATING TEMPERATURE RANGE	-40 °C TO 60 °C				STORAGE TEMPERATURE RANGE	-25 °C TO 60 °C			
	VOLTAGE	125 V AC				CURRENT	1 A			

SPECIFICATIONS

ITEM	TEST METHOD	REQUIREMENTS	QT	AT
------	-------------	--------------	----	----

CONSTRUCTION				
GENERAL EXAMINATION	VISUALLY AND BY MEASURING INSTRUMENT.	ACCORDING TO DRAWING.	<input type="checkbox"/>	<input type="checkbox"/>
MARKING	CONFIRMED VISUALLY.		<input type="checkbox"/>	<input type="checkbox"/>

ELECTRIC CHARACTERISTICS


CONTACT RESISTANCE	100 mA (DC OR 1000 Hz AC).  (ONE EXAMPLE OF CONNECTOR CONFIGURATION IS SHOWN.) EXCLUDES CABLE BULK RESISTANCE.	50 mΩ MAX.	<input type="checkbox"/>	<input type="checkbox"/>
INSULATION RESISTANCE	100 V DC.	100 MΩ MIN.	<input type="checkbox"/>	<input type="checkbox"/>
VOLTAGE PROOF	500 V AC FOR 1 min.	NO FLASHOVER OR BREAKDOWN.	<input type="checkbox"/>	<input type="checkbox"/>
NEAR END CROSSTALK(NEXT)LOSS	MEASURED MINIMUM NEXT LOSS FOR EACH PAIR COMBINATION AT 100 Hz , PATCH CODE TEST 0.5m	35.28 dB MIN.	<input type="checkbox"/>	<input type="checkbox"/>

MECHANICAL CHARACTERISTICS

MECHANICAL OPERATION	200 TIMES INSERTIONS AND EXTRACTIONS.	① CONTACT RESISTANCE: 70 mΩ MAX. ② NO DAMAGE, CRACK AND LOOSENESS, OF PARTS.	<input type="checkbox"/>	<input type="checkbox"/>
VIBRATION	FREQUENCY 10 TO 55 Hz, SINGLE AMPLITUDE 0.75 mm, — m/s ² AT 2 h, FOR 3 DIRECTIONS.	① NO ELECTRICAL DISCONTINUITY OF 5 μs. ② CONTACT RESISTANCE: 70 mΩ MAX.	<input type="checkbox"/>	<input type="checkbox"/>
SHOCK	490 m/s ² DIRECTIONS OF PULSE 11 ms AT 3 TIME FOR 3 DIRECTION.	③ NO DAMAGE, CRACK AND LOOSENESS, OF PARTS.	<input type="checkbox"/>	<input type="checkbox"/>

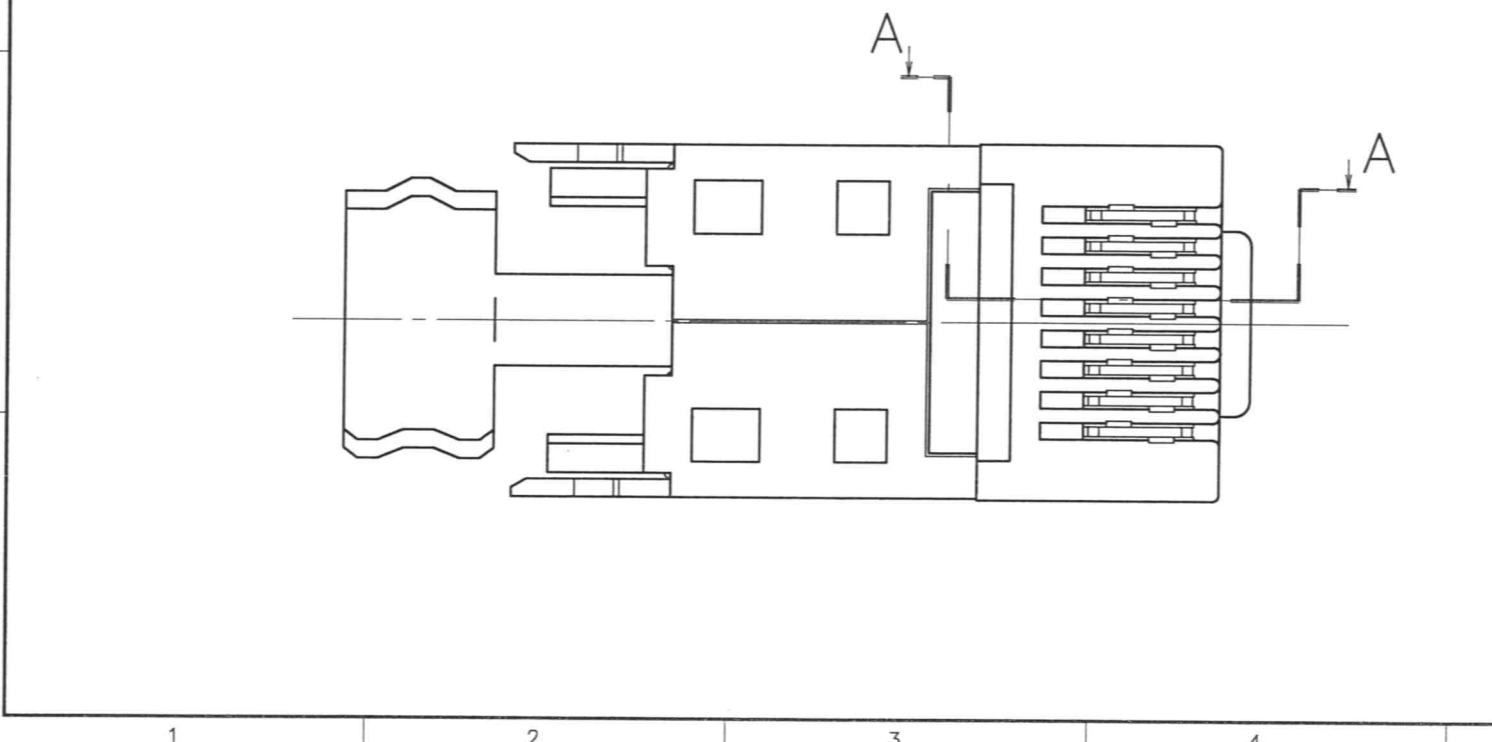
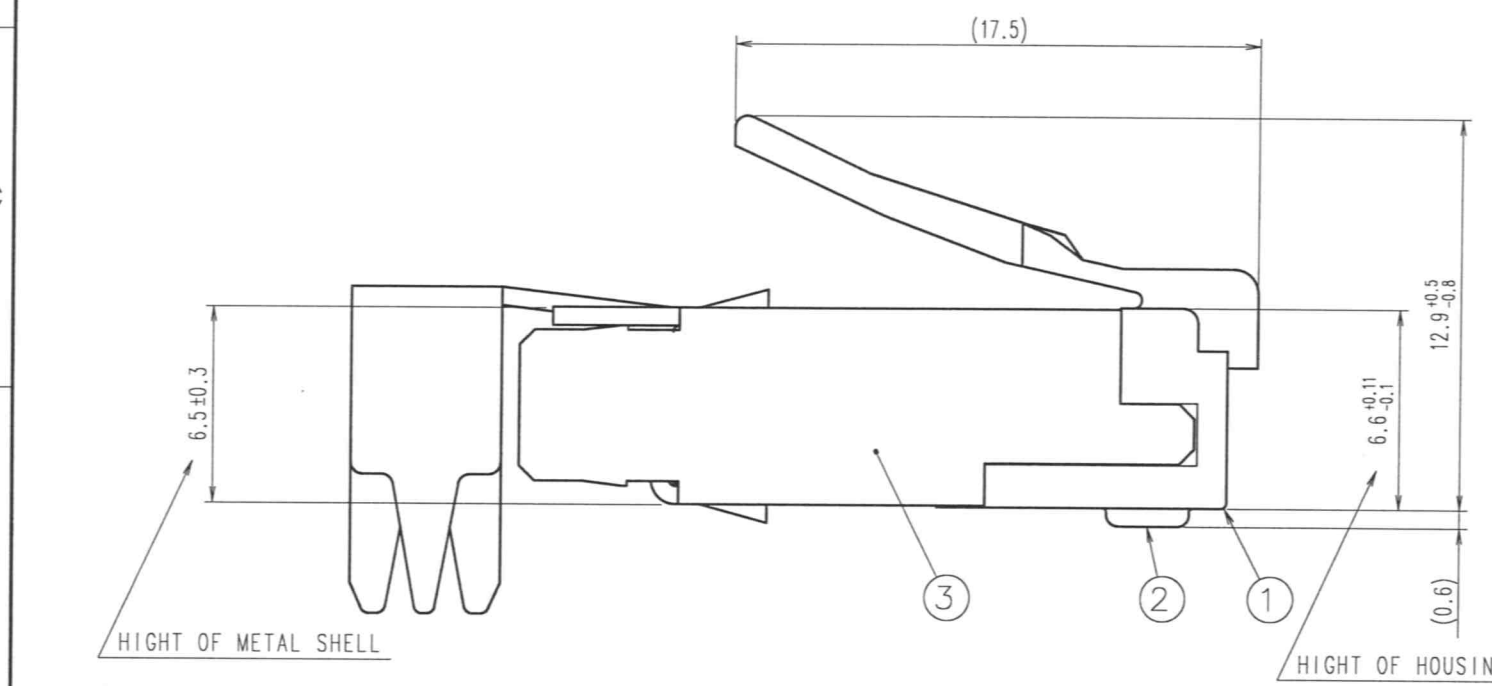
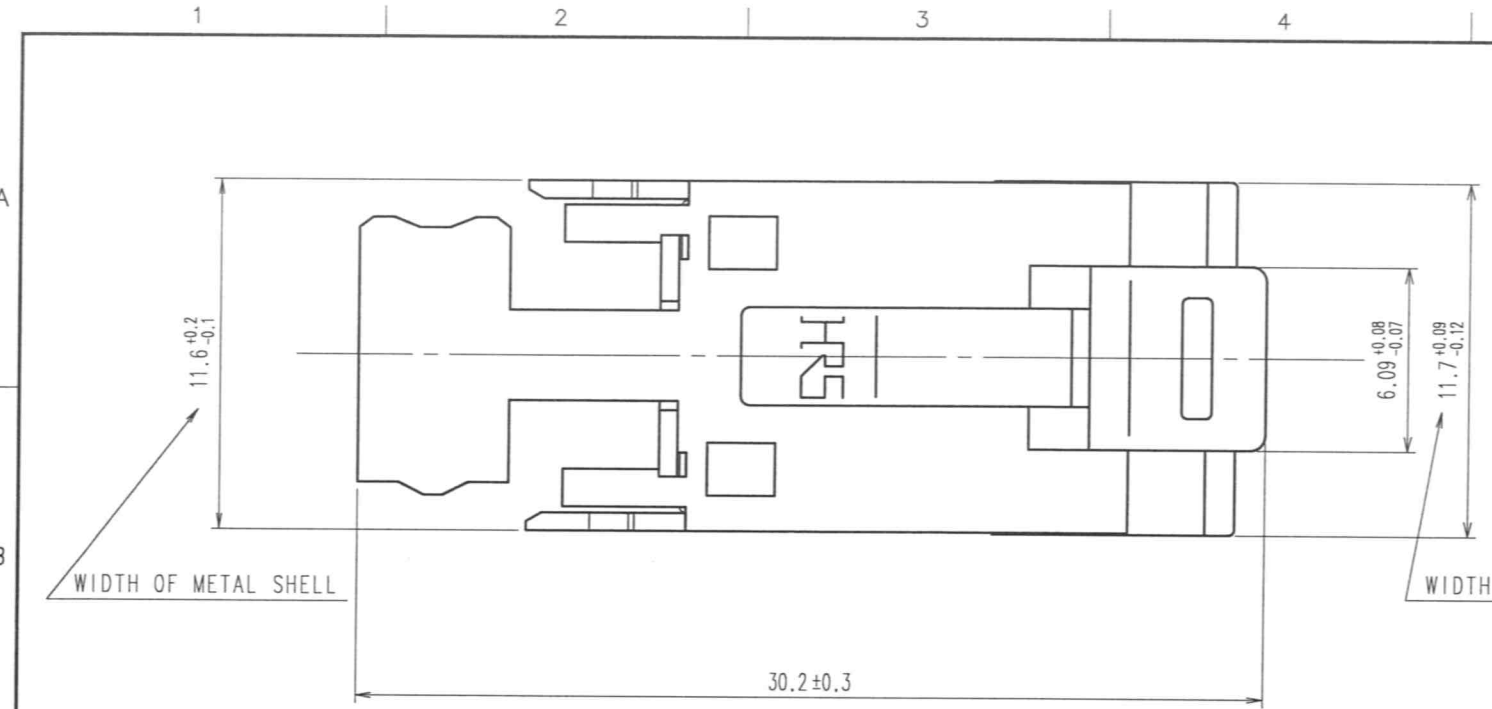
ENVIRONMENTAL CHARACTERISTICS

DAMP HEAT (STEADY STATE)	EXPOSED AT 40 °C, 90 TO 95 %, 500 h.	① CONTACT RESISTANCE: 70 mΩ MAX. ② INSULATION RESISTANCE: 1 MΩ MIN. (AT HIGH HUMIDITY) ③ INSULATION RESISTANCE: 10 MΩ MIN. (AT DRY) ④ NO DAMAGE, CRACK AND LOOSENESS, OF PARTS.	<input type="checkbox"/>	<input type="checkbox"/>
RAPID CHANGE OF TEMPERATURE	TEMPERATURE -55±3 →5 TO 35→85±2 → 5 TO 35°C TIME 30 TO 35→5 MAX→30 TO 35 →5 MAX min UNDER 5 CYCLES.	① CONTACT RESISTANCE: 70 mΩ MAX. ② INSULATION RESISTANCE: 100 MΩ MIN. ③ NO DAMAGE, CRACK AND LOOSENESS, OF PARTS.	<input type="checkbox"/>	<input type="checkbox"/>
CORROSION SALT MIST	EXPOSED IN 5 % SALT WATER SPRAY FOR 48 h.	① CONTACT RESISTANCE: 70 mΩ MAX. ② NO DAMAGE, CRACK AND LOOSENESS, OF PARTS.	<input type="checkbox"/>	<input type="checkbox"/>

REMARKS	DRAWN	DESIGNED	CHECKED	APPROVED	RELEASED
	<i>S. Sato</i>	<i>S. Sato</i>	<i>Y. Enami</i>	<i>H. Miura</i>	
Unless otherwise specified, refer to JIS C 5402.					

Note QT:Qualification Test AT:Assurance Test ○:Applicable Test					
HRS HIROSE ELECTRIC CO., LTD.		SPECIFICATION SHEET		PART NO.	
				TM21DP – TM – 88P (60)	
CODE NO.(OLD)	DRAWING NO.	CODE NO.	1/1		
	ELC4 – 125383 – 01	CL 222 – 2941 – 3 – 60			

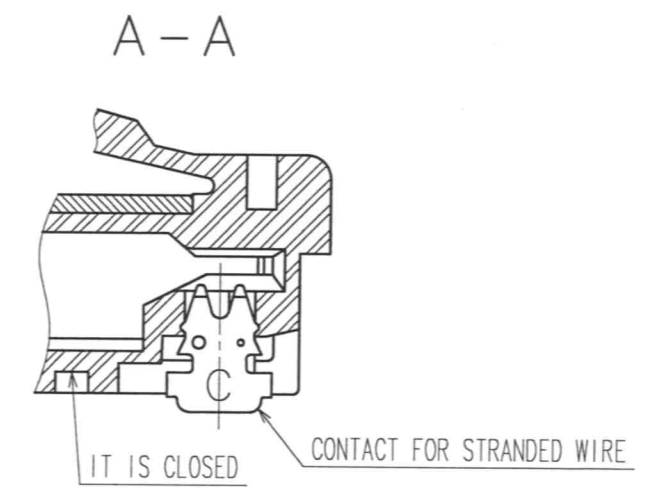
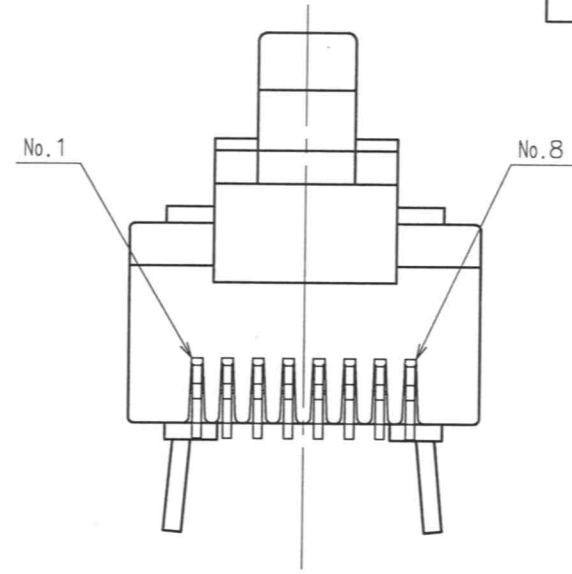
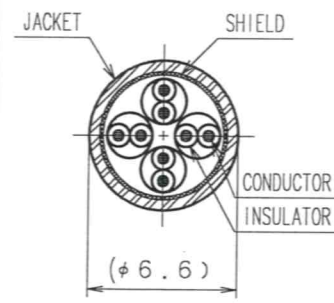
TO
Q



COUNT	DESCRIPTION OF REVISIONS	BY	CHKD	DATE	COUNT	DESCRIPTION OF REVISIONS	BY	CHKD	DATE
△					△				
△					△				
△					△				

2 TABLE-1

APPLICABLE CABLE WIRE	
CONDUCTOR	AWG#24/7 STRANDED WIRE
	AWG#26/7 STRANDED WIRE
	AWG#27/7 STRANDED WIRE
INSULATOR DIAMETER	(φ 0.9 ~ φ 1.0)
JAKET DIAMETER	(φ 6.6) *1



- NOTES
- 1 THE DIMENSIONS IN PARENTHESIS ARE FOR REFERENCE
 - 2 APPLICABLE CABLE IS SHOWN IN TABLE-1
* 1 : THE OUTER DIAMETER OF THE VINYL JAKET VARIES SLIGHTLY DEPENDING ON THE HARDNESS:6.6DIA. IS FOR REFERENCE.
 - 3 TO SATISFY CAT5e PERFORMANCE, PLEASE ASSEMBLE ACCORDING TO HRS INSTRUCTION.
 - 4 APPLY SEPARATELY ORDERED GUIDE PLATE TM21P-88P(22) CL222-2862-9-22.

2	PHOSPHOR BRONZE	GOLD PLATING 1.27μ m			
1	POLYCARBONATE	(CLEAR RED) UL94V-2	3	BRASS	TIN PLATING
NO.	MATERIAL	FINISH, REMARKS	NO.	MATERIAL	FINISH, REMARKS
CODE NO. (OLD)			DRAWN	DESIGNED	CHECKED
			S. Sato	S. Sato	Y. Enami
			05-08-01	05-08-01	05-08-01
			APPROVED	RELEASED	
			X. Miwa	ENG '05.8 DEPT	
			05-08-01		
DRAWING NO.			PART NO.		
EDC3-125383-01			TM21DP-TM-88P(60)		
SCALE			CODE NO.		
4 : 1			CL222-2941-3-60		
UNITS			1/1		
mm			HRS HIROSE ELECTRIC CO., LTD		

TO
Q